

# SUBMITTAL SHEETS

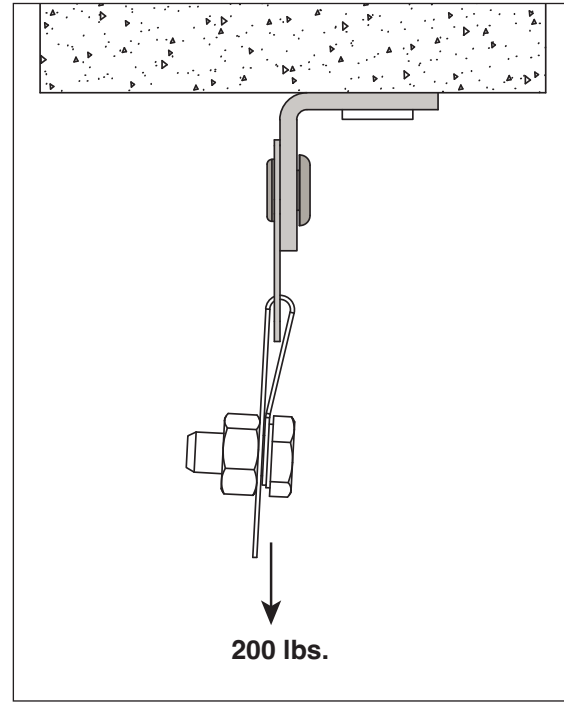
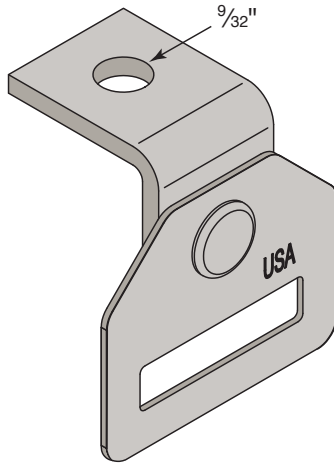
## Spring Steel



### Structural Attachment

#### ABSHP

Angle Bracket with Strap Hanger



- Supports pipe or duct with strapping.
- Fits strap up to 1" wide.
- **Material:** Steel & Spring Steel
- **Finish:** Pregalvanized & Silva-Guard

Finish or Material Order Codes			
Material/Finish	ASTM Designation	Material/Finish Codes	Description
Carbon Steel	ASTM A1011-00 SS GR 33 or ASTM A1011-00CS Type B	See Finishes Below	Steel
Spring Steel	ASTM A684 Grade 1055	See Finishes Below	Cold rolled Spring Steel sheet
Silva-Guard	--	<b>SG</b>	Silva-Guard coating is a multi-step process that meets the 1000 hour salt spray test per ASTM B117 and DIN 50021. Silva-Guard coating is WEEE, ELV and RoHS compliant. SG Finish is approved for outdoor as well as indoor applications. It is a chrome free duplex coating system that combines an inorganic zinc-rich base coat with an aluminum-rich organic topcoat.
Electroplated	ASTM B 633 SC1 or SC3, Type III	<b>EG</b>	This coating is standard for most products. Electroplating deposits zinc on the surface of the steel by electrolysis from a bath of zinc salts.
Pre-Galvanized	A 653 SS GR33 G90.	<b>PG</b>	Pre-galvanized zinc is produced by continuously rolling steel coils or sheets through molten zinc at the mills.

PROJECT INFORMATION:		APPROVAL STAMP:	
Project:			
Date:	Phone:		
Architect / Engineer:			
Contractor:			
Address:			
Notes 1:			

ABSHP

H08/24 - 76



**WARNING:** Cancer and Reproductive Harm Warning.  
For more information go to [www.P65Warnings.ca.gov](http://www.P65Warnings.ca.gov).

[www.ZSIINC.com](http://www.ZSIINC.com)

